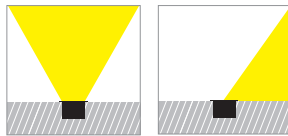
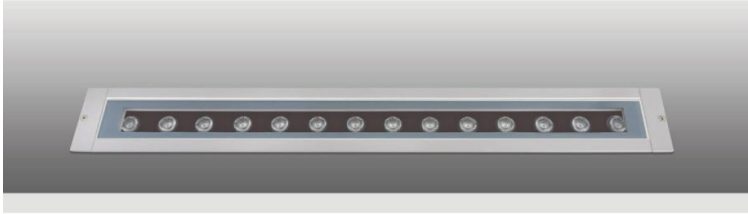


Terra Line Led 5



- Linear inground recessed waterproof led luminaire
- suitable for outdoors use
- made from extruded anodized aluminum body
- painted with polyester powder suitable for external use
- with ground base from aluminum
- with heavy duty protective glass 8mm thick
- with incorporated high power led smd
- adjusted on high performance linear heatsink
- for best heat management
- CRI>80 | 3 SDCM as standard
- upon request available with CRI>90
- in 3000-4000 KELVIN
- also available upon request in 2700-3500-5000-6500 Kelvin
- with lenses of symmetrical beam angle 10°-15°-25°-35°-45°-60°*
- or with lenses of elliptical beam angle 15°x35°, 20°x60°*
- or with lenses of asymmetrical beam angle**
- works with built in led driver, on/off as standard
- upon request dimmable phase cut/Dali/1-10v
- with silicone gaskets and stainless-steel screws
- with 1 or 2 brass nickel plated cable glands IP68
- for input and output of power supply cables
- offered with pre-fitted neoprene cable
- with male and female fis fast connection with IP68 protection

CRI>80 | Power & Luminous Flux

Final lumen output depends on the selection of the angle beam

30269	7.0W	7x1.0W	220-240v	3000-4000 KELVIN	560-595 LUMEN	DIM (1)	⬇️⬆️⬆️
30270	14.0W	14x1.0W	220-240v	3000-4000 KELVIN	1120-1190 LUMEN	DIM (2)	⬇️⬆️⬆️
30271	21.0W	21x1.0W	220-240v	3000-4000 KELVIN	1680-1785 LUMEN	DIM (3)	⬇️⬆️⬆️
30272	28.0W	28x1.0W	220-240v	3000-4000 KELVIN	2240-2380 LUMEN	DIM (4)	⬇️⬆️⬆️

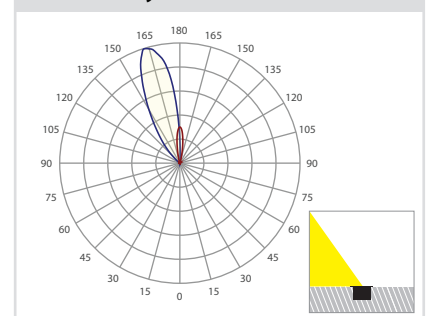
GLASS (8mm)

CE IP67

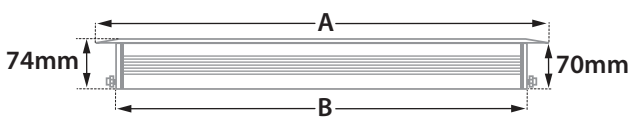
ΔΙΑΣΤΑΣΕΙΣ ΦΩΤΙΣΤΙΚΩΝ DIMENSIONS OF LUMINAIRES				ΔΙΑΣΤΑΣΕΙΣ ΒΑΣΕΩΝ ΕΔΑΦΟΥΣ DIMENSIONS OF GROUND BASES		ΔΙΑΣΤΑΣΕΙΣ ΟΠΗΣ OPENING DIMENSIONS		
DIM	CODE	A	B	C	D	LENGTH	WIDTH	DEPTH
[1]	30269	349mm	319mm	342mm	426mm	439mm	100mm	110mm
[2]	30270	645mm	615mm	648mm	732mm	745mm	100mm	110mm
[3]	30271	945mm	915mm	978mm	1062mm	1075mm	100mm	110mm
[4]	30272	1245mm	1215mm	1278mm	1362mm	1375mm	100mm	110mm

i *due to wide variety of available and suitable lenses for above luminaire, the included angle beams are indicative and can be considered as the most used. Upon request the beam angle of the lenses can be adjusted accordingly to your needs.

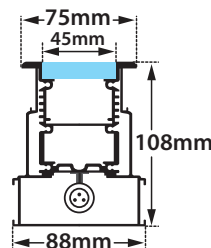
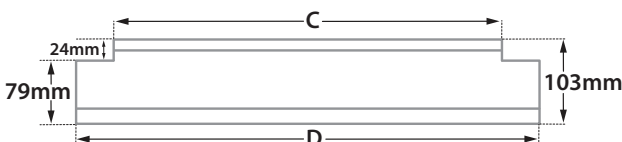
** Asymmetric Version



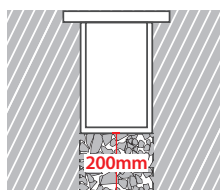
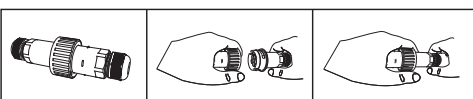
ΔΙΑΣΤΑΣΕΙΣ ΦΩΤΙΣΤΙΚΟΥ / LUMINAIRE DIMENSIONS



ΔΙΑΣΤΑΣΕΙΣ ΒΑΣΗΣ ΕΔΑΦΟΥΣ / GROUND BASE DIMENSIONS



With pre-connected IP68
male and female fis for fast connection



ΠΡΟΣΟΧΗ: Σε όλα τα φωτιστικά σώματα χωνευτά δαπέδου κατά την εγκατάσταση θα πρέπει να δημιουργείτε τουλάχιστον 20cm βάθος οπής αποστράγγισης, γεμάτη χαλίκι, για την αποφυγή στάσιμων υδάτων ή να χρησιμοποιείτε για τον ίδιο λόγο αγωγούς αποχέτευσης. Χρησιμοποιείτε μόνο καλώδια τύπου H07RN, άλλου είδους καλώδια μπορεί να μην εξασφαλίζουν βαθμό στεγανότητας IP67 ή IP68.

WARNING: In all ground buried lighting fittings installation, at least 20cm depth drain hole filled by gravel must be made to prevent flooding, or for same reason use draining water pipes. Use H07RN cables only as other types of cables may not be conformed to assure the IP67 or IP68 rating.



5339 IP68 RATED MULTI-WAY CONNECTOR BOX
ΣΤΕΓΑΝΟ ΚΟΥΤΙ ΔΙΑΚΛΑΔΩΣΗΣ



Standard color 18

Available colors upon request 01 02

i *Η τεχνολογία των LED είναι σε διαρκή εξέλιξη, οπότε πριν παραγγείλετε, παρακαλούμε επιβεβαιώστε ποιο LED είναι διαθέσιμο. LED technology changes constantly forward, so before selecting / ordering the most suitable product for you, ask for a confirmation that this is the most updated product to our list.

— warm 2700 Kelvin — warm white 3000 Kelvin — neutral white 4000 Kelvin