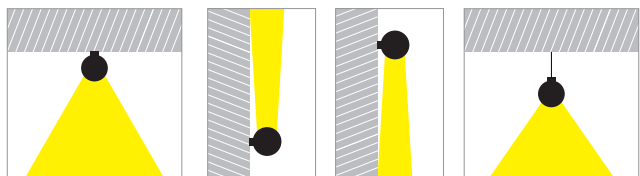
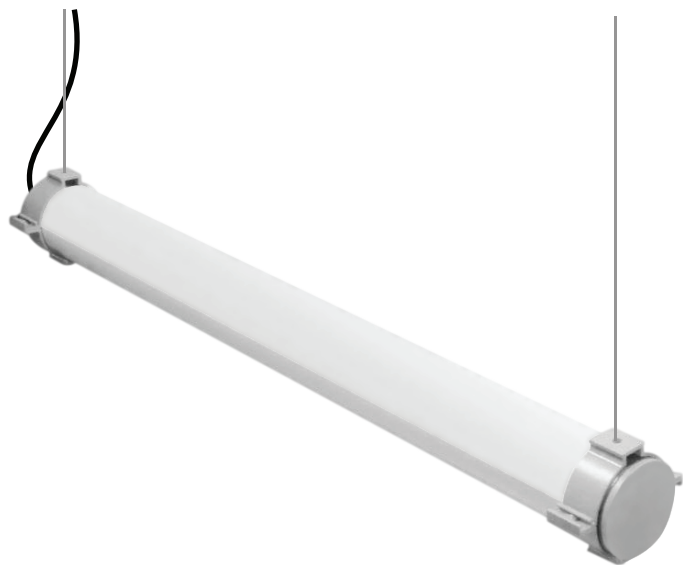


LINEAR LIGHT IN 70



- Linear ceiling mounted or pendant luminaire
- for indoors use
- from heavy duty polycarbonate tube mat/satin cover
- with external diameter Ø70mm
- with internal extruded aluminum powder coated
- with incorporated Linear Led Engine (LLE)
- seamless effect without shadows between modules
- based on 140mm-280mm-560mm lengths
- adjusted on a linear heatsink for best thermal management
- in 3000-4000 Kelvin
- upon request also available in 2700-5000-6500 Kelvin
- works with built in led driver , on/off as standard
- upon request available with dimmable driver phase cut/Dali/1-10v



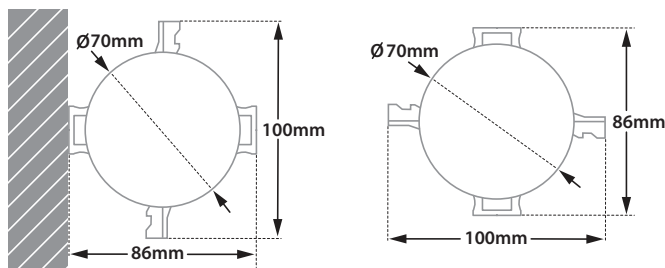
KIT ANΑΡΤΗΣΗΣ

Αποτελούμενο από 2 συρματόσχοινα μήκους 1,20m με τα εξαρτήματά τους για στήριξη στην οροφή και στο φωτιστικό, με έτοιμο συνδεδεμένο καλώδιο διάφανο 3x0,75mm ή 5x0,75mm, με βάση χυτή αλουμινίου στρογγυλή εξωτερικής διαμέτρου Ø60mm και ύψους 15mm, όλα έτοιμα συνδεδεμένα στο φωτιστικό.

SUSPENSION KIT

Composed by 2 pcs of steel wire with length 1.20m assembled to fitting, with 1.50m long power supply cable 3x0.75mm or 5x0.75mm transparent, connected to fitting. And 1 pc of round die cast aluminum ceiling base with external diameter 60 mm and height 15mm. All components ready pre-fitted to luminaire.

CODE	LENGTH IN mm	LED SOURCE POWER	LUMINOUS FLUX 3000 KELVIN	LUMINOUS FLUX 4000 KELVIN
34390	600	12	1044	1092
34391	740	15	1305	1365
34392	880	18	1566	1638
34393	1020	21	1827	1911
34394	1160	24	2088	2184
34395	1300	27	2349	2457
34396	1440	30	2610	2730
34397	1580	33	2871	3003
34398	1720	36	3132	3276
34399	1860	39	3393	3549
34400	2000	42	3654	3822



Linear Led Modules

