

## Technoline 5 LLE



- Linear wall fixed led luminaire
- waterproof, suitable for exteriors use
- suitable for diffuse lighting effect
- with brackets at the two sides
- for capability of movement  $\pm 90^\circ$
- from extruded aluminum
- polyester powder coated
- suitable for resistance under harsh environment conditions
- with protective tempered opal glass 5 mm thick
- **90° beam angle**
- with silicon gaskets and inox screws
- with incorporated linear smd led modules
- adjusted on a high performance linear heatsink
- for best thermal management of led sources
- CRI>80| 3 SDCM as standard
- upon request available with CRI>90
- 3000-4000 Kelvin, as standard
- upon request available in 2700-3500-5000-6500 Kelvin
- works with built in led driver, on/off as standard
- upon request dimmable Phase cut/1-10v/Dali
- with 1 or 2 cable glands IP68
- for input and output of power supply cables
- upon request offered with pre-fitted neoprene cable
- with male and female fis fast connection with IP68 protection

### CRI>80 | Power & Luminous flux

#### Version 1

23902	8.20W   220-240v	3000-4000 KELVIN	637-688 LUMEN	LENGTH=378mm	⬇️⬆️⬆️
23903	16.4W   220-240v	3000-4000 KELVIN	1274-1376 LUMEN	LENGTH=618mm	⬇️⬆️⬆️
23904	24.6W   220-240v	3000-4000 KELVIN	1911-2064 LUMEN	LENGTH=918mm	⬇️⬆️⬆️
23905	32.8W   220-240v	3000-4000 KELVIN	2548-2752 LUMEN	LENGTH=1218mm	⬇️⬆️⬆️

#### Version 2

23906	9.60W   220-240v	3000-4000 KELVIN	737-795 LUMEN	LENGTH=378mm	⬇️⬆️⬆️
23907	19.2W   220-240v	3000-4000 KELVIN	1474-1590 LUMEN	LENGTH=618mm	⬇️⬆️⬆️
23908	28.8W   220-240v	3000-4000 KELVIN	2211-2385 LUMEN	LENGTH=918mm	⬇️⬆️⬆️
23909	38.4W   220-240v	3000-4000 KELVIN	2948-3180 LUMEN	LENGTH=1218mm	⬇️⬆️⬆️

#### Version 3

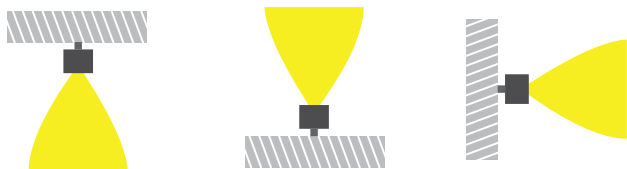
23910	11.0W   220-240v	3000-4000 KELVIN	837-903 LUMEN	LENGTH=378mm	⬇️⬆️⬆️
23911	22.0W   220-240v	3000-4000 KELVIN	1674-1806 LUMEN	LENGTH=618mm	⬇️⬆️⬆️
23912	33.0W   220-240v	3000-4000 KELVIN	2511-2709 LUMEN	LENGTH=918mm	⬇️⬆️⬆️
23913	44.0W   220-240v	3000-4000 KELVIN	3348-3612 LUMEN	LENGTH=1218mm	⬇️⬆️⬆️



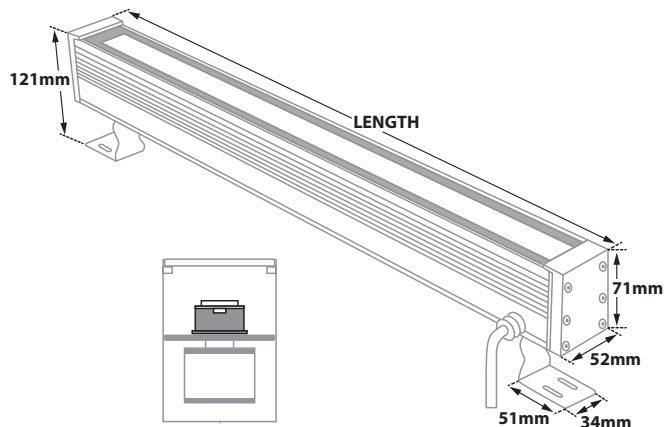
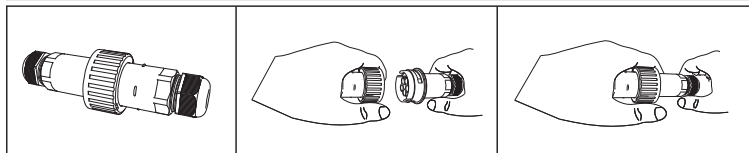
Linear Led Engine/Module



GLASS (5mm)



With pre-connected IP68 male and female fis for fast connection



Standard color 18

Available colors upon request 01 02



LED technology changes constantly forward, so before selecting / ordering the most suitable product for you, ask for a confirmation that this is the most updated product to our list.

— warm 2700 Kelvin — warm white 3000 Kelvin — neutral white 4000 Kelvin