

Technoline 6 Asymmetric High



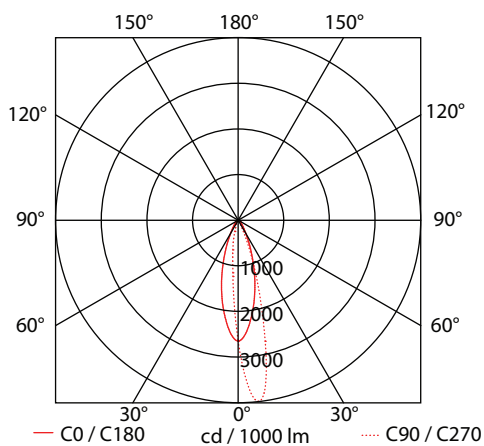
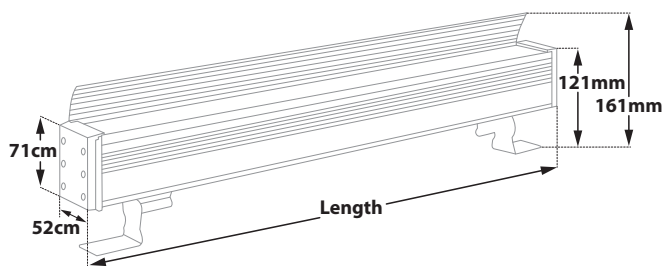
- Linear led lighting fitting
- wall-ceiling-floor mounted
- waterproof suitable for exteriors use
- from extruded aluminum polyester powder coated
- suitable for resistance in external spaces
- with incorporated High Power Led Smd technology
- CRI>80 | 3 SDCM | as standard
- upon request available with CRI>90
- adjusted on a linear cooling system for best thermal management
- in 2700K-3000K-4000K color temperature
- upon request also available in 3500K-5000K and 6500K
- with lenses of asymmetrical beam angle
- work with built in led driver, on/off as standard
- upon request available with dimmable led driver
- phase cut/Dali/1-10volt
- with 1 or 2 cable glands PG9 IP68 or PG11 IP68
- for input and output of power supply cables
- with brackets at the two sides for capability of movement
- with silicon gaskets and inox screws
- upon request is offered with pre-fitted cable in neoprene
- with male and female fis fast connection with IP68 protection
- suitable for exterior lighting of building facades, windows

CRI 80 | System power & Luminaire Flux

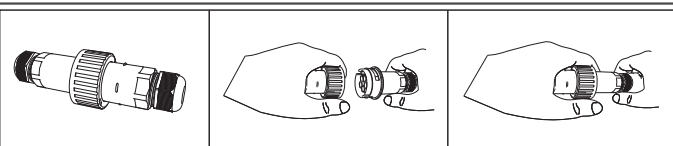
23962		14.0W 7x2.0W	220-240V	2700-3000-4000 KELVIN	1244-1310-1411 LUMEN	LENGTH=315mm			
23963		28.0W 14x2.0W	220-240V	2700-3000-4000 KELVIN	2488-2620-2822 LUMEN	LENGTH=615mm			
23964		42.0W 21x2.0W	220-240V	2700-3000-4000 KELVIN	3732-3930-4233 LUMEN	LENGTH=915mm			
23965		56.0W 28x2.0W	220-240V	2700-3000-4000 KELVIN	4976-5240-5644 LUMEN	LENGTH=1215mm			
23966		70.0W 35x2.0W	220-240V	2700-3000-4000 KELVIN	6220-6550-7055 LUMEN	LENGTH=1515mm			

GLASS (5mm)

CE IP65



Upon request luminaire is available with pre-connected IP68 male and female fis for fast connection



Standard color 18

Available colors upon request 01 02



LED technology changes constantly forward, so before selecting / ordering the most suitable product for you, ask for a confirmation that this is the most updated product to our list.

■ warm 2700 Kelvin
 ■ warm white 3000 Kelvin
 ■ neutral white 4000 Kelvin