

# Technoline 6 Asymmetric

Version 1



- Linear led lighting fitting
- wall-ceiling-floor mounted
- waterproof suitable for exteriors use
- from extruded aluminum polyester powder coated
- suitable for resistance in external spaces
- with incorporated High Power Led Smd technology
- CRI>80 | 3 SDCM |as standard
- upon request available with CRI>90
- adjusted on a linear cooling system for best thermal management
- in 2700K-3000K-4000K color temperature
- upon request also available in 3500K-5000K and 6500K
- with lenses of asymmetrical beam angle
- work with built in led driver, on/off as standard
- upon request available with dimmable led driver
- phase cut/Dali/1-10volt
- with 1 or 2 cable glands PG9 IP68 or PG11 IP68
- for input and output of power supply cables
- with brackets at the two sides for capability of movement
- with silicon gaskets and inox screws
- upon request is offered with pre-fitted cable in neoprene
- with male and female fis fast connection with IP68 protection
- suitable for exterior lighting of building facades, windows

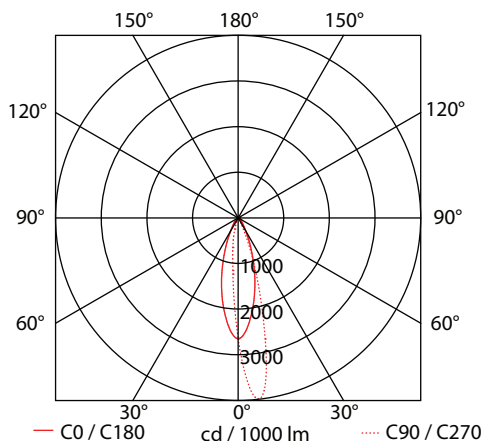
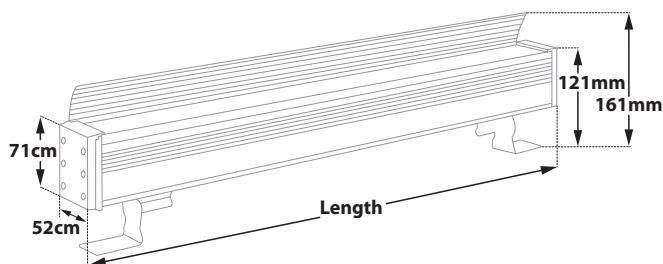
## CRI >80 | System power & Luminaire Flux

### Asymmetric Version 1

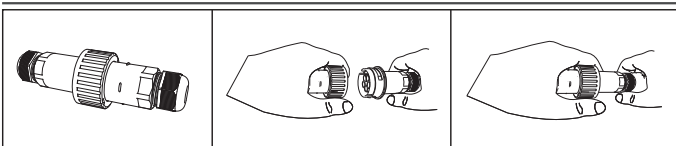
23952		8.4W	7x1.20W	220-240V	2700-3000-4000 KELVIN	790-832-880 LUMEN	LENGTH=315mm	
23953		16.8W	14x1.20W	220-240V	2700-3000-4000 KELVIN	1580-1664-1760 LUMEN	LENGTH=615mm	
23954		25.2W	21x1.20W	220-240V	2700-3000-4000 KELVIN	2370-2496-2640 LUMEN	LENGTH=915mm	
23955		33.6W	28x1.20W	220-240V	2700-3000-4000 KELVIN	3160-3328-3520 LUMEN	LENGTH=1215mm	
23956		42.0W	35x1.20W	220-240V	2700-3000-4000 KELVIN	3950-4160-4400 LUMEN	LENGTH=1515mm	

GLASS (5mm)

CE IP65



Upon request luminaire is available with pre-connected IP68 male and female fis for fast connection



Standard color 18

Available colors upon request 01 02



LED technology changes constantly forward, so before selecting / ordering the most suitable product for you, ask for a confirmation that this is the most updated product to our list.

— warm 2700 Kelvin — warm white 3000 Kelvin — neutral white 4000 Kelvin