



- Linear led lighting fitting
- wall-ceiling-floor mounted
- waterproof suitable for exteriors use
- from extruded aluminum polyester powder coated
- suitable for resistance in external spaces
- with incorporated High Power Led Smd technology
- CRI>80 | 3 SDCM |as standard
- upon request available with CRI>90
- adjusted on a linear cooling system for best thermal management
- in 2700K-3000K-4000K color temperature
- upon request also available in 3500K-5000K and 6500K
- with lenses of asymmetrical beam angle
- work with built in led driver, on/off as standard
- upon request available with dimmable led driver
- phase cut/Dali/1-10volt
- with 1 or 2 cable glands PG9 IP68 or PG11 IP68
- for input and output of power supply cables
- with brackets at the two sides for capability of movement
- with silicon gaskets and inox screws
- upon request is offered with pre-fitted cable in neoprene
- with male and female fis fast connection with IP68 protection
- suitable for exterior lighting of building facades, windows

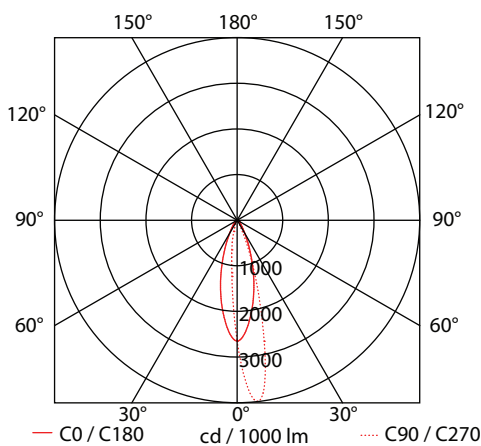
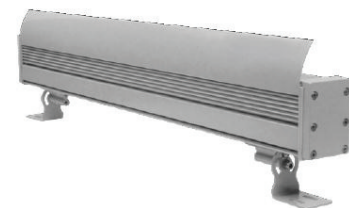
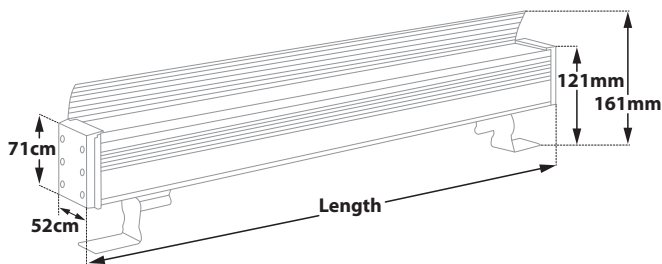
## CRI &gt;80 | System power &amp; Luminaire Flux

## Asymmetric Version 2

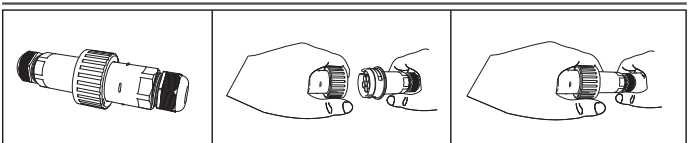
23957		12.6W	7x1.8W	220-240V	2700-3000-4000 KELVIN	1078-1135-1213 LUMEN	LENGTH=315mm	
23958		25.2W	14x1.8W	220-240V	2700-3000-4000 KELVIN	2156-2270-2426 LUMEN	LENGTH=615mm	
23959		37.8W	21x1.8W	220-240V	2700-3000-4000 KELVIN	3234-3405-3639 LUMEN	LENGTH=915mm	
23960		50.4W	28x1.8W	220-240V	2700-3000-4000 KELVIN	4312-4540-4852 LUMEN	LENGTH=1215mm	
23961		63.0W	35x1.8W	220-240V	2700-3000-4000 KELVIN	5390-5675-6065 LUMEN	LENGTH=1515mm	

GLASS (5mm)

CE IP65



Upon request luminaire is available with pre-connected IP68 male and female fis for fast connection



Standard color 18

Available colors upon request 01 02



LED technology changes constantly forward, so before selecting / ordering the most suitable product for you, ask for a confirmation that this is the most updated product to our list.

■ warm 2700 Kelvin   
■ warm white 3000 Kelvin   
■ neutral white 4000 Kelvin